

# Community Impact Report 2017



# Change the future of our community

Just imagine if every child in the Twin Counties was healthy and reading on grade level by the end of the third grade. Imagine healthy kids and a thriving, economic community. What if we put more resources into supporting programs and services for our youngest children?

We all want the same thing - a safe place to live and work, good schools, good health and a brighter future for our children. Can we count on your involvement and financial support this year? Your donation will:

## Improve the lives of children

The future of our workforce depends on literacy goals being met. Nash and Edgecombe counties were selected as one in 5 coalitions across the state to be a part of the National Campaign for Grade-level Reading. This is a tremendous honor. This campaign did not come with funding, but we have a great coalition of partners who formed Twin Counties Read to Rise to help ensure every child is reading on grade level by the end of the third grade.

## Create a better economy

Increasing investment in early intervention makes our workforce healthier and our economy stronger. We have developed the Healthy Kids Collaborative as a way to change health outcomes and improve learning environments. Through nutrition education and an active lifestyle, risk factors for chronic diseases such as cancer, stroke and diabetes are lowered.

## Make an investment with great returns

Participants in high quality early childhood programs have higher earnings, pay more taxes and are less likely to rely on government assistance. Researchers tell us the highest rate of return in early childhood development comes from investing as early as possible, from birth through age five, in disadvantaged families. The majority of such returns are to the community.

Your donation today will be recognized on our website and at our 2018 Week of the Young Child celebration in April and in next year's Community Impact Report. Please contact us at 252-985-4300 if you have questions or need more information. Thank you for your time and support.



The  
**Down East  
Partnership  
for Children**

## Growing Our Community Together

### Annual Giving Campaign Donation Card

I/We pledge the following total gift amount \$\_\_\_\_\_ to the  
**Down East Partnership for Children**, a 501(c)(3) nonprofit organization.

- ☐ To be paid today, with check enclosed or cash  
☐ Please invoice me for this donation

- ☐ To be paid online with a credit/debit card  
at [www.depc.org/donate](http://www.depc.org/donate)

NAME \_\_\_\_\_  
ADDRESS \_\_\_\_\_  
PHONE \_\_\_\_\_ EMAIL \_\_\_\_\_

Please make checks payable to DEPC, PO Box 1245, 215 Lexington Street, Rocky Mount NC 27802

\*DEPC is qualified as a charitable organization under Section 501 (c)(3) of the Internal Revenue Code. Contributions to DEPC are tax-deductible to the extent permitted by law.\*

## Thank You!



# OUR MISSION

**Launching every child as a healthy, lifelong learner by the end of third grade!**

## OUR VISION

**We believe that all children and their families can reach their full potential when surrounded by a united and supportive community.**

## OUR GOALS

- 1. Health and Development are on track beginning before birth**
- 2. Families are engaged and communities are coordinated**
- 3. Early care and education are high quality**
- 4. Teaching and learning environments for K-3 students are effective inside and out, 365 days a year**



### Board of Directors

**Jama Greene**, Board Chair  
**Karen Lachapelle**, Vice Chair & Evaluation Committee Chair  
**Rusty Holderness**, Treasurer  
**Tim Wilson**, Secretary  
**Kristi Snuggs**, CCR&R Advisory Committee Chair  
**Stacy Jesso**, Community Outreach Committee Chair

#### Members:

**Fred Belfield, Jr.**  
**Donna Boone**  
**Art Bradley**  
**Dr. Valerie Bridges**  
**Sherron Deal**  
**Eric Evans**

**Debby Futrell**  
**Charlene Hedgepeth**  
**Dr. Shelton Jefferies**  
**Shawanda Jordan**  
**Bernice King**  
**Bob League**

**Sorell Massenburg**  
**Catherine Roche**  
**Marva Scott**  
**Monique Smith**  
**Mary Miller Stocks**

# MAKING AN IMPACT IN OUR COMMUNITY

**16,352**

Children 0-8 years old in Nash  
& Edgecombe counties

**11,102**



Children benefited from parent  
education and support programs

**821** Children benefited  
from DEPC child care  
scholarships and NC Pre-K



**1,288** hours  
of service were  
given by **297**  
volunteers

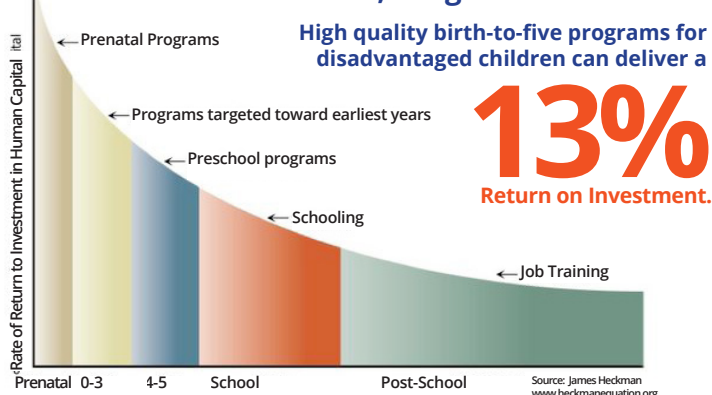
**738** Early care professionals  
participated in child care  
quality training

**3202**  
People visited the  
Family Resource  
Center this year



## Creating a Better Economy

The earlier the investment, the greater the return.



# WHY WE NEED YOUR SUPPORT

## LITERACY

61% of children in Nash and Edgecombe  
Counties are NOT reading on grade level  
by the end of the third grade



## HEALTH

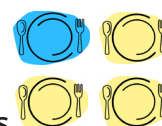
Too many children and adults are obese  
or overweight

**30%**  
of children in Nash  
& Edgecombe are  
obese or overweight.

**65%**  
of adults in NC  
are obese or  
overweight.

Healthy food options are often not available  
or affordable

**1** in **4** children in NC face  
food insecurity. 23.5% in Nash  
county and 28% in Edgecombe  
county live in Food Insecure Homes



## SCHOOL READINESS

Too many children are starting school  
at risk for school failure

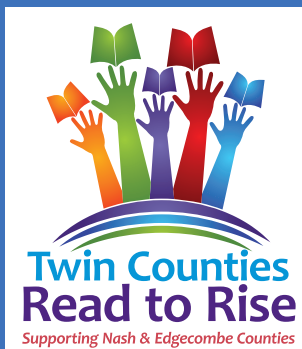
Quality early care, literacy, summer learning,  
school attendance are all important to early  
school success. Risk factors include: living below  
the poverty level, mothers with less than a high  
school diploma, single parent home, primary  
language spoken at home is not English.

## POVERTY

Over 1/3 of children in Nash and  
Edgecombe counties currently  
live in poverty.

# 2016-17 HIGHLIGHTS

## Twin Counties Read to Rise Launched



The single greatest predictor of future academic and career success is reading on grade level by the end of the third grade. This year, Nash and Edgecombe counties joined the Campaign for Grade-Level Reading (GLR), a nationwide movement to increase early reading proficiency. As a result, a coalition across Nash and Edgecombe counties called Twin Counties Read to Rise was created to support strategies beginning at birth that put children on a pathway to grade-level reading by the end of third grade. Join the work of Edgecombe and Nash partners to help our community clear the pathway to success for our children.

Bailey Elementary  
Boice-Willis Clinic  
Boys & Girls Club  
Braswell Memorial Library  
Communities in School  
Cummins Rocky Mount Engine Plant  
Down East Partnership for Children

Edgecombe County Public Library  
Edgecombe County Schools  
Harrison Family YMCA  
F.I.T.  
Head Start, N.E.E.D., Inc.  
Nash-Rocky Mount School District  
Nashville Baptist Church

Peacemakers  
PNC Community Foundation  
Rocky Mount Children's Museum & Science Center  
Teach for America  
United Way of the Tar River Region

## Farm to Child Care

Learning Stones in Edgecombe County and St. Stephen's Loving Day Care in Nash



County were part of a Farm to Child Care pilot program in North Carolina this year. The program is designed to bring North Carolina grown fruits and vegetables into

child care facilities for meals and snacks. The statewide pilot, funded by the W.K. Kellogg Foundation, was developed by the Center for Environmental Farming Systems and facilitated locally by DEPC. Partners included Working Landscapes, Cooperative Extension, and Conetoe Family Life Center.



## 81,691

### meals were served at Summer Feeding/Learning Sites

DEPC provided coordination and support for sites to incorporate a physical activity and literacy component this year.

## Faithful Families

Churches across the Twin Counties are getting healthy and making changes as a part of the Faithful Families Eating Smart and Moving More initiative.



Participating churches follow a 9-week curriculum with trained lay leaders that serve as health ambassadors in their faith communities. As a result, communities are making changes in their diets, exercising more and learning how to prepare healthier meals and make better choices. Some churches have also implemented policy changes to prepare healthier meals at church activities. Deacon Eddie Norfleet of St. Stephens Missionary Baptist Church said the program has caused him to make changes that will last a lifetime.

*For more about this program and St. Stephens' journey click here.*

## Book Donations Support Latino Hispanic Families

Our thanks to The Rocky Mount Telegram for the donation of books to area Latino Hispanic families. The Telegram provided this resource to promote literacy. We'd also like to recognize the book drives coordinated by the Rocky Mount Chamber and many of DEPC's wonderful faith-based partners. If you would like to organize a book drive in your community, please contact us at 252-985-4300.



## Online Tool for Parents Now Available

DEPC introduced free online child development screening tools using the Ages and Stages Questionnaire (ASQ®). The ASQ® tool is fun, doctor-recommended, and teaches you to recognize developmental milestones and support your child as they grow. Visit [www.depc.org](http://www.depc.org) to check it out!



## Positive Parenting Program a Resource for Families, Businesses

DEPC provides support to more than 70 Positive Parenting Program (Triple P) practitioners and has doubled the number of families and children served over the past year. Triple P doesn't tell people how to parent, rather, it gives them simple and practical strategies they can adapt to suit their own values, beliefs and needs. Triple P is also different because it is not a "one-size-fits-all" program. It's a system that offers increasing levels of support to meet parents' different needs. Parents can choose anything from attending a large public seminar, a small discussion group or receive individual support from a DEPC accredited Triple P staff member. Triple P Tip Sheets and workbooks are utilized to help facilitate discussion regarding a parent's specific need, a seminar or discussion group topic.



## F.I.T. Kids Play 60 Minutes a Day!



Athletes from Rocky Mount Senior High School teamed up with F.I.T. families to promote staying active 60 minutes each day. To see the full campaign, visit [www.depc.org/F.I.T.](http://www.depc.org/F.I.T.)



# Early Care & Education

High quality care makes a difference



Of children in child care

**88%** **72%**

in Edgecombe County and in Nash County

are in the highest quality care.



**7,200** books were distributed in 7 medical clinics during well visits

**554** children participated in the Raising a Reader program



*73% of parents surveyed say they are reading with their children more each week.*

**86** children and 74 caregivers participated in Playgroups at three sites (Nashville Library, Braswell Library and DEPC)

*"She has been able to interact with other children her own age which has enhanced her social skills. She has also been given a head start in education."*

*-- Scholarship Parent*

**738** early childhood professionals participated in education and training offered by DEPC

## Early Care & Education Programs

Child Care Resource & Referral  
Farm to Child Care  
Smart Start Scholarships  
NC Pre-K  
Coordinated Subsidy  
Healthy Social Behavior  
Shape NC  
Infant Toddler QI Project  
WAGE\$

Professional Development  
Director & Teacher Leadership  
Raising a Reader  
Ready Schools  
Ready Communities  
Early Childhood Transition  
Preschool-Kindergarten Transition

# Health

Health and development on track beginning before birth.

This year, DEPC reached more than 6,272 children and adults through health-based initiatives

As a result:

- 94 % of children are more willing to try fruits and vegetables as a result of gardening
- Fewer families go hungry
- Nutritious foods are more accessible
- Participants say they know more about healthy food options after connecting with DEPC
- More families are active and play 60 minutes each day. 85% of surveyed parents report an increase in daily physical exercise



- After school programs, child care centers, faith community and housing authority partners are promoting healthy food choices

- More gardens are available to the public

DEPC facilitates programs to increase the percentage of children at a healthy weight through the following strategies:

1. Increase physical activity
2. Increase consumption of fruits and vegetables

**89%** of participating child care centers increased healthy foods on their menus (GO NAPSACC)



**100%** of participating churches in **Faithful Families** implemented policies and practices focused on healthy eating and efforts to increase the physical activity of their congregation

## Health Programs

Circle of Parents  
Reach Out and Read  
Outdoor Learning Environments  
Triple P Parenting Program  
Healthy Kids Collaborative

Families Involved Together (F.I.T.)  
Faithful Families  
Food for Thought  
Summer Feeding/Learning Program  
Ages and Stages Questionnaire  
SNAP-Ed Health and Nutrition



## Families & Communities

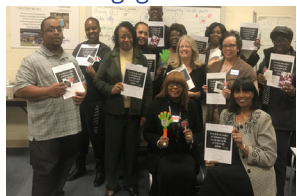
### Engaged families & coordinated communities

This year, DEPC connected community and faith-based partners to coordinate a variety of initiatives that support health and literacy in our community. A few highlights:



• **Faith Based Initiatives:** **West Side Church of Christ** coordinated two faith-based initiatives for Latino Hispanic families at Edgecombe County Public School Migrant Program including a book drive to increase literacy and a backpack drive to provide supplies to families.

• **Community Fellows:** 16 leaders graduated from the Community Fellows program this year and are engaged in volunteer opportunities such as Read Across America, the Week of the Young Child, Millionaire Mom Breakfast at Baskerville Elementary, Kindergarten Canvassing at Food Lion and Family Fun Day at Sunset Park.



• Great collaboration with **Rocky Mount Housing** around health outcomes by facilitating the connection of Cooperative Extension to facilitate a 6 week Cooking Class for both sites. Ready Communities successfully facilitated two 4 week Nutrition Education Classes at Rocky Mount Housing where 100% of the residents surveyed reported increased knowledge and awareness healthy eating and active living strategies.



Supported the creation of two **community gardens**. Residents working in the gardens were exposed to fresh fruits and vegetables and named themselves "The Garden Girls" as they maintained the gardens, picked fresh fruits and vegetables and incorporated

the produce into their menu planning and provide produce for other Housing residents.

• **All Pro Dads:** DEPC connected 3 new faith-based partners to All Pro Dad schools at Englewood, G.W. Bulluck and Coker Wimberly. A new chapter was started at Carver Elementary. There are 13 All Pro Dad programs in Nash and 7 in Edgecombe.

### Family & Community Programs

Family First  
Flex Funds  
Kaleidoscope Playgroups  
Incredible Years  
Outdoor Learning Environments  
Family Resource Center  
Technical Assistance  
Families Involved Together (F.I.T.)  
Campaign for Grade Level Reading

Raising a Reader  
All Pro Dads  
Faithful Families  
Community Fellows  
Triple P Parenting Program  
Circle of Parnts  
Dolly Parton Imagination Library  
CCR&R Consumer Education

## K-3 Environments

### Effective teaching and learning for K-3 students, inside and out, 365 days a year

Highlights from the year:

#### • Attendance Matters

Coker-Wimberly, GW Bulluck, Baskerville, and Williford Elementary Schools participated in "You Must be Present to Win" during the 2016-2107 school year. In an effort to decrease student absenteeism, children were recognized when they were identified as "being present" during the school day.

The Twin Counties Read to Rise initiative is promoting **Attendance Matters: All Day, Every Day** to address attendance. Attending school on a regular basis will help improve reading scores. Visit DEPC's website for more information or to access resources for parents.



#### Celebrating Model Schools in Health!

GW Bulluck Elementary School is well on its way to becoming a "model" school recognizing the importance of health on student and family success. A School Community Team – known as the Wellness Team meets monthly to coordinate activities. An annual "Walk at School Day," a walking club



for students and staff, nutrition and gardening lessons led by FoodCorps service members, and a bi-weekly afterschool gardening club (65 children participate) highlight the school health initiatives. North Carolina Active Routes to School (ARTS) and

FoodCorps North Carolina are collaborative partners in the work. Additionally, three classrooms tout hydroponic systems, growing plants in water rather than soil, as a hands-on learning opportunity for young children. The school is working to improve the Pre-K outdoor learning environment and build an outdoor adaptive playspace in 2017-2018. Let us salute GW Bulluck – it's leadership, staff, families and children for their efforts to improve the lives of their children!

**94% of children in school garden clubs increased their willingness to try fruits and vegetables!**

### K-3 Environments Programs

Ready Schools  
Ready Communities  
Outdoor Learning Environments  
SPARK training for afterschool providers

Summer Ready and Feed  
Campaign for Grade Level Reading  
All Pro Dads  
Food Corps  
Attendance Campaign

# FINANCIAL OVERVIEW

## Expenditures

### Programs & Support Services:

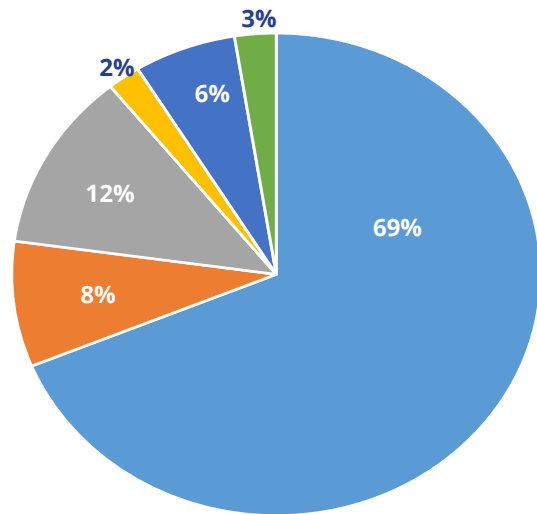
Child Care Subsidy	\$3,928,704
Child Care Resource & Referral	\$480,229
Family Support	\$685,825
Ready Schools/Ready Communities	\$115,107
Healthy Kids Collaborative	\$356,381
Research & Evaluation	\$144,585
<b>Total Program Services</b>	<b>\$5,710,831</b>
Management and General	\$505,153

**Total Expenditures** \$6,215,984

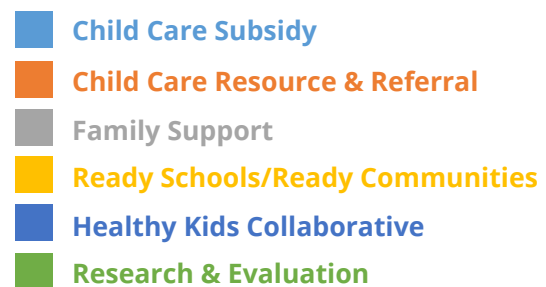
## Assets

Change in Net Assets	-\$75,683
Net Assets, Beginning of Year	\$612,292
Net Assets, End of Year	\$536,609

(Unaudited)





### Programs & Services Expenditures



## 2017 Week of the Young Child Sponsors

**DONATE NOW**

 **Thank you to our donors!** To view a full list of donors, visit [www.depc.org](http://www.depc.org) or [click here](#)

 **Volunteers** are at the heart of the Partnership. This year 1288 hours of volunteer service were given in a variety of activities. **Check out our list of volunteers and thank them for their support.**



**Silver**  
Barnhill Contracting Company

**Bronze**  
Metro Maintenance  
Sheetz  
Woodforest National Bank

**Friend**  
Standard Insurance  
Universal Leaf  
Lela Chesson  
Stacy Jesso

**Donation**  
Allen's Nursery  
G.W. Bulluck Elementary

**In-Kind**  
Chick-fil-a  
Joyner Media Strategies