



Down East  
Partnership for Children

# Child Care Resource and Referral Core Services Professional Development Training Calendar

*July 2022- December 2022*

*Updated on August 10, 2022*

Down East Partnership for Children is a nonprofit organization founded in 1993 by citizens concerned about education and economic development of Nash and Edgecombe Counties. It provides a model of services focused on prevention and intervention targeting young children ages 0-8.

**Follow us on Facebook and Twitter!**

For more information about Down East Partnership for Children, visit [www.depc.org](http://www.depc.org)

Down East Partnership for Children Region 14  
Child Care Resource and Referral  
215 Lexington Street  
Rocky Mount, NC 27802  
Telephone: 252-985-4300

Child Care Resource and Referral provides all services in an unbiased manner without regard to race, ethnicity, religion, handicap, and national origin.





The DEPC Child Care Resource and Referral sponsors in-service training monthly to early childhood providers and professionals who work with children birth to twelve years of age.

## Training Announcements

Training announcements will be distributed at least twice per program year. Additional scheduled training information will be sent out separately either via email or postal mail.

## Registration Procedures

Complete all information on the registration form for each registrant. Completed registration form and required payment should be:

- **Received by the stated deadline date**
- **Mailed to Down East Partnership for Children, PO Box 1245, Rocky Mount, NC 27801 (Attention- Professional Development training.)**

**NO REGISTRATION WILL BE ACCEPTED AFTER THE DEADLINE DATE**

## Cost

Payment for trainings must be received on or before the deadline date. Payments can be made via check/money and mailed to DEPC, Attention: Professional Development training. Payment for registration fees include credit hours (contact or CEU), certificate and lunch when specified.

## Credit/Fee transfers

Credit /transfer of payments of fee **will only be given** if a workshop is canceled by the Down East Partnership for Children Child Care Resource and Referral. Registered persons will be notified by telephone/email of cancellation. **No refund given**. Payment can be applied to other scheduled training within the same calendar period.

## Substitution

If you need to make a substitution for a confirmed registration contact **Tracy L Pittman Down East Partnership for Children at (252) 985-4300 ext. 204 at least 48 hours prior** to the scheduled workshops.

No refund/credit is given if you cannot attend a scheduled workshop. Workshops will be rescheduled if there are five or less participants on the registration sheet.

## Cancellation

If you need to cancel your registration contact **Tracy L Pittman Down East Partnership for Children at (252) 985-4300 ext. 204 at least 48 hours prior** to the scheduled workshops.

Down East Partnership for Children reserves the right to cancel a training session if:

- Inclement weather
- Emergency situations (trainer)
- Not enough registrants (10 or less)

**Substitution can only be APPROVED by Tracy L Pittman, do not contact the trainer.**

## Attendance/Arrival

### Face to Face

- Arrive to training on time
  - If you arrive to the training more than 10 minutes late you will not be allowed to attend the training and NO REFUNDS or TRANSFER of fees will be provided.
- Children will not be permitted into the training unless specifically noted on the training flyer that childcare will be provided. No child shall be left unsupervised at any time.
- Registrants must complete the demographical information upon entrance of the training session

### Virtual

- Registration and demographical information must be completed before the training (the exact date will be provided in the email sent by the trainer within 3-5 days of the training).
- Do not share the registration link with others, the link will be sent to all approved registrants of the training. (DO NOT SHARE THE LOGIN INFORMATION)
- Camera must be turned on during the training session.
- It is the registrant's responsibility to make sure the correct email address is provided.

**Training certificates will only be given to participants who complete**

**The pre/post survey  
Pre-work (when applicable)  
Training evaluation  
Entire training session**

## Southwestern On Demand Training Platform

- Southwestern On Demand <http://www.swcdcinc.org>



## Regional Educational trainings/CEU'S

- Infant/Toddler Education Specialist [www.childcareservices.org](http://www.childcareservices.org)
- Healthy Social Behaviors Education Specialist [www.childcareservice.org](http://www.childcareservice.org)
- School Age Education Specialist [www.swcdcinc.org](http://www.swcdcinc.org)
- By mail: Send in completed registration form for the appropriate education specialist workshop with money order or check to the address provided on the registration form.

## Workshop Courtesies

- Trainers reserve the right to dismiss and/or withhold certificates when necessary due to participants' behavior. (not attending entire training/ inappropriate behavior)
- Please respect others and their opinions
- Please set cell phones to vibrate or silent
- When taking virtual training compliance with childcare requirements will be followed. (not allowed to attending training while in the classroom with children)

*All questions related to Professional Development training can be directed to CCR&R Core Services Program Manager, Tracy L Pittman at 252-985-4300 ext. 204 or [tpittman@depc.org](mailto:tpittman@depc.org)*

# Meet The Trainers/Presenters

## **Carrie Becker,**

*Transforming Early Childhood Education LLC*

Carrie has 20 years of experience in education with a focus on early childhood and special education. She has a bachelor's degree in elementary and special education and a master's degree in curriculum/instruction. Carrie has taught in traditional and emergent classroom settings in public and independent school learning environments. Since childhood, Carrie knew she wanted to be a mom and a teacher.

Carrie uses her experiences in education as a guide for her educational consulting business- Transforming Early Childhood Education. Carrie is the developer and facilitator of teacher training workshops; she acts as a teacher mentor and creates specialized emergent-based curriculum frameworks. She has a passion for creating environments that foster a love of learning while seeing all children as competent and capable of guiding their educational path



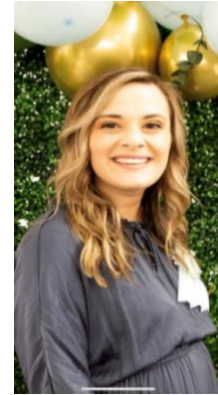
*"Southwest High School 2022 Teacher of the Year"*



## ***Makayla Ortiz,***

*Regional Child Health Care Consultant*

Child Care Health Consultant serving Nash, Wilson and Edgecombe counties. I am a registered nurse with a background in pediatric emergency medicine and am excited to continue my career in this new role. I am a new mother of a baby boy and love to read, quilt and spend my free time on the water. I am looking forward to getting out in the community to meet new people and assisting facilities in any way that I can!”



## ***Jasmine Smith,***

*Regional Infant Toddler Specialist*

Jasmine is a former preschool teacher with a vast amount of experience working with children ages 0 to 5. She is currently working on her Master of Education at UNCG. She is here to assist in all Infant and Toddler needs!



## ***Natasha Williams,***

*NC Pre K Quality Improvement Specialist*

Natasha has over 10 years of experience in the early childhood field. She is a former NC Pre K Teacher and has experience working with ages 0-12.



## ***Shewanna Lynch Manning,***

*Quality Improvement Specialist*

Brings over 20 years of experience in working within the community in the area of early childhood education (daycare). Ready to provide quality professional development training and technical assistance Family Child Care homes and School age programs as well as Infant, Toddler & Preschool classroom



***Bonnie Jean Kuras, M. ED.,***  
*Training Specialist at TEDU BEAR CAC*

Bonnie Jean Kuras, M. ED., is currently providing education in the recognition, prevention and response to child sexual abuse, Adverse Childhood Experiences, the science of Resilience and Circle of Security Parenting to community members and various agencies in Eastern N.C. Prior to her move to N.C. She spent nearly 30 years as an educator/ adjunct college instructor, elementary and middle school in the state of NH. She was nationally named the Darkness2Light-Stewards of Children Authorized Facilitator of the Year Award for 2021.



***Shaquana Bynum,***  
*Regional Healthy Social Behavioral Specialist*

Shay Butter as the children like to call her. Is a former Head Start teacher that now focuses on the providing evidence-based research and relationship base technical assistance and professional development training geared towards social emotional behavior of children ages 0-5 in the early childhood classroom.



***Sarah Prezioso,***  
*Department Chair, Nash Community College*

Sarah Prezioso has been teaching early childhood education teachers for more than 15 years. She is the Early Childhood Education Program Director at Nash Community College.



***Tracy L Pittman,***  
*CCR & R Core Service Program Manager*

*Tracy brings expertise from both regional and migrant Head Start, she serves as the program manager and oversee and provides technical assistance and professional development to Early Childhood Education Professionals (as she likes to refer to childcare providers) within Region 14 (Edgecombe, Halifax, Nash, Warren & Wilson Counties.*



# Professional Development Trainings

## ITS SIDS

This training provides an overview of sudden infant death syndrome (SIDS), identifies risk factors and describes ways to reduce the risk of SIDS in childcare. Participants will receive the needed information to create a Safe Sleep Policy, learn about sleep waivers/documenting sleeping baby and updated research about SIDS. Participants will also be walked through how to complete an unresponsive infant drill and the reason for doing them regularly.

**Target Audience: Infant & Toddler early childhood professionals**

**Tuesday July 12, 2022 @ 2:00 pm (Virtual)—FULL/ CLOSED**

*(Capacity limited to 10)*

**Fee and completed registration form must be received by Tuesday July 5, 2022**

**Tuesday September 13, 2022 @ 2:00 pm (Virtual) FULL/ CLOSED**

*(Capacity limited to 10)*

**Fee and completed registration form must be received by Tuesday September 6, 2022**

**Wednesday November 9, 2022 @ 4:00 pm-6pm (Virtual)**

*(Capacity limited to 10)*

**Fee and completed registration form must be received by Wednesday November 2, 2022**

*2 Contact hours | Cost \$5.00 per person*

**Trainer:** Jasmine Smith Regional Infant Toddler Specialist



## **Playground Safety**

This training is the updated version of the North Carolina Playground Safety training adapted from the 2009 Playground Safety Training created by Dr. Karen DeBord at North Carolina State University. This training continues to reflect Dr. Bedford's vision while also following the Division of Child Development and Early Education (DCDEE) guidelines and requirements that ensure the safety of each child while in an outdoor learning environment. In this revised training, participants will be given up to date content, materials, resources, videos, and pictures that reflect the standards set up by North Carolina and DCDEE.

**Target Audience:** *All early childhood professionals*

**Thursday July 21, 2022 @ 10:00 am- 2:30 pm**

*Nash Community College*

*522 N. Old Carriage Road Rocky Mount NC*

*4 contact hours | Cost \$25.00 per person*

*In person (Capacity limited to 10)*

**Fee and completed registration form must be received by Thursday July 14, 2022**

**Friday October 14, 2022 @ 1:00 pm –5:00 pm**

*First United Methodist Church*

*100 Church Street Rocky Mount NC*

*4 contact hours | Cost \$25.00 per person*

*In person (Capacity limited to 10)*

**Fee and completed registration form must be received by Tuesday September 30, 2022**

**Trainer:** Shewanna Manning Core Quality Improvement Specialist

Tracy L Pittman CCR & R Core Services Program Manager

## **It Feels Like Home**

Our learning environments should be a natural extension of the home. Our spaces should respond to and reflect the individual students and their teachers while feeling warm and welcoming. You will learn ways to design your environment for connection and learning during this workshop.

**Target Audience:** *Infant & Toddler early childhood professionals*

**Wednesday, July 27, 2022 @ 6:30pm-8:30pm (Virtual session)**

*(Capacity limited to 30)*

**Fee and completed registration form must be received by Wednesday, July 20, 2022**

*2 contact hours | Cost \$5.00 per person*

**Trainer:** Carrie Becker, Transforming Early Childhood Education LLC



## **Workplace Resilience - Strategies to Combat Stress**

During this presentation, attendees will learn to identify the markers of stress, vicarious trauma and burn-out while giving providers opportunities to manage on the job stress and secondary trauma. This will be done through the introduction of simple, efficient tools that rebalance the nervous system during and after chronic stress.

**Target Audience:** *All early childhood professionals*

**Thursday August 11, 2022 @ 6:30 pm - 8:30 pm (Virtual session)**

*(Capacity limited to 30)*

*1.5 contact hours | Cost: FREE*

**Registration must be completed by August 4, 2022**

**Registration link** <https://forms.gle/Z5uT95y6HL5jGQn78>

**Trainer:** Bonnie Kuras

## **Sniffles, Sneezes & Tummy Aches (Immunization & Disease Prevention in Childcare)**

During this training sessions participants will discuss common childhood illnesses, immunizations requirements & recommendations and disease prevention in the childcare setting.

**Target Audience:** *All early childhood professionals*

**Thursday August 18, 2022 @ 6:30 pm-8:30 pm (Virtual training)**

*(Capacity of 20)*

*2 contact hours Cost \$5.00 per person*

**Fee and completed registration form must be received by Thursday August 11, 2022**

**Trainer:** Makayla Ortiz

## **North Carolina Foundations for Early Learning and Development**

This training provides attendees with resources that can improve their knowledge of child development, guide them through lesson planning implementation, assist in the development and implementation of developmentally appropriate goals and activities for children.

**Target Audience:** *All early childhood professionals*

**Friday, August 19, 22 @ 10:00 am- 2:30 pm- ~~CANCELLED~~**

*Nash Community College Child Development Center  
522 N Old Carriage Road Rocky Mount NC*

*In person- Capacity limited to 10*

*5 contact hours/.5 CEU-\$25.00 per person*

**Fee and completed registration form must be received by Friday August 5, 2022**

### **Trainer(s):**

Natasha Williams, NC Pre K Quality Improvement Specialist  
Shewanna L. Manning, Core Quality Improvement Specialist  
Tracy L Pittman, CCR & R Core Services Program Manager

## **CPR & First Aid**

This training is required by NC DCDEE for early childhood providers.

**Saturday, August 27, 2022 @ 8:00 am- 1:00 pm**

**Fee and completed registration form must be received by Friday August 12,2022**

**Saturday, October 22, 2022 @ 8:00 am- 1:00 pm**

**Fee and completed registration form must be received by Friday October 14, 2022**

**Saturday, December 10, 2022 @ 8:00 am- 1:00 pm**

**Fee and completed registration form must be received by Wednesday November 23,2022**

William S. Carver Continuing Education Building (room 8246)  
3866 Eastern Ave, Rocky Mount, NC 27804

*In person- Capacity limited to 10*

*\$55.00 per person*

**Trainer:** *Sarah Prezioso, Department Chair, Nash Community College*



## **Emergency Preparedness**

This training provides early educators with information and tools to prepare for many types of emergencies. The EPR in Child Care Training addresses new NC Child Care Rules on emergency preparedness, current best practice recommendations, and guidance on completing the online EPR Plan.

**Wednesday September 7, 2022 @ 5:30 pm- 8:00pm**

*Nash Community College (Child Development Center)*

*Rocky Mount NC*

*Capacity limited to 10*

*3 contact hours | \$10.00 per person*

**Fee and completed registration form must be received by Wednesday August 31, 2022**

**Trainer:** Takisha Jones, Private trainer

## **BSAC: Before and After School Care**

As MANDATED by the North Carolina Division of Child Development and Early Education, group leaders and assistant group leaders working with school-age classrooms must complete BSAC training within the first 6 weeks of employment. School age providers and school age resources are crucial to the development of children and youth into successful, competent adults. The BSAC training will cover five areas:

**Health/Safety/Nutrition**

**Environmental Design**

**Child/Youth Development**

**Developmentally Appropriate Activities**

**Guiding Child Behavior**

**Target Audience:** *School Age early childhood professionals*

**Tuesday August 23, 2022 @ 10:00 am - 3:00 pm**

*Braswell Library – Rocky Mount NC*

*(In person limit of 10)*

*5 contact hours/.5 CEU Cost \$25.00 per person*

**Fee and completed registration form must be received by Tuesday August 9, 2022**

**Trainers:**

Shewanna Lynch Manning, Core Quality Improvement Specialist

Tracy L Pittman, CCR & R Core Services Program Manager

## **FCCH Business Atlas-Series: The Business Atlas Overview**

1<sup>st</sup> session of this series is the Business Atlas Overview for Family Child Care Providers during this session attendees will at the conclusion of this session attendees and trainer will collectively select dates and times for the remaining sessions, Self-Care, Your Story, Money & Rules

**Target Audience: Family Child Care Home Providers**

**Wednesday August 31, 22 @ 6:30 pm- 8:30 pm**

*First United Methodist Church*

*100 South Church Street Rocky Mount NC*

*In person Capacity limited to 10*

*2 contact hours | FREE*

**Completed registration form must be received by Wednesday August 17,2022**

### **Trainers:**

Shewanna Manning, Core Quality Improvement Specialist

Tracy L Pittman, CCR & R Core Service Program Manger

## **Behavioral Intervention Strategies**

You want me to try what? Teachers who care for children with behavioral difficulties, often find themselves reacting in ways that reinforce the behavior and make it worse. Behavioral intervention strategies are planned responses to behaviors that help teachers prepare for situations in which past responses have not been successful. This session focuses on helping participants develop new responses to challenging behaviors using six key intervention strategies

**Target Audience: All early childhood professionals**

**Tuesday September 20, 2022 @ 6:30 pm -8:30 pm (Virtually) FULL/ CLOSED**

*Capacity limited to 15*

*2 contact hours | \$5.00 per person*

**Fee and completed registration form must be received by Tuesday September 13, 2022**

**Trainer:** Shaquana Bynum, Regional Healthy Social Behavioral Specialist





## **Learning from within Fostering Leadership in School Age Professionals**

The goal of this learning event is to assist after school providers with gaining leadership skills through fun, interactive activities that will help participants become informed, create a plan and prepare to lead! Participants will be introduced to knowledge and strategies to increase leadership skills in themselves and the children they serve.

**Target Audience: School Age providers**

**Thursday September 22, 2022 @ 6:30-8:30 (virtual)**

*Capacity limited to 20*

*2 contact hours | \$10.00 per person*

**Fee and completed registration form must be received by Thursday September 8, 2022**

**Trainer:** Angela Pate, NC CCR& R School Age Initiative Consultant

## **Burnout Prevention**

When we think of Burnout, we often think of high-power positions. But fact is, anyone can get burnout from doing any type of job. This training will address how burnout affects childcare teachers, children, parents and administrators of childcare centers. We will take time to define burnout, understand how to recognize it, look at some strategies to reduce burnout, identify the causes of burnout and discuss solutions for recovering from burnout. All participants will be able to see how specifically burnout is related to childcare providers while understanding the importance of working out a plan to reduce burnout.

**Target Audience: All early childhood professionals**

**Wednesday October 19, 2022 @ 6:30 pm (Virtually)**

*Capacity limited to 30*

*2 contact hours | \$5.00 per person*

**Registration deadline date: Wednesday October 12, 2022**

**Trainer:** Takisha Jones, Private trainer

## **Building a Classroom Community**

The foundation of a classroom is built around routines and classroom connections. Children must feel safe and connected to their caregivers and know what to expect from their environment to explore and thrive. In this workshop, teachers will explore the importance of building a classroom community.

**Target Audience:** *Infant & Toddler early childhood professionals*

**Monday October 24, 2022 @ 6:30 pm (Virtually)**

*Capacity limited to 30*

*2 contact hours | \$ 5.00 per person*

**Registration deadline date: Monday October 17, 2022**

**Trainer:** Carrie Becker, Transforming Early Childhood Education LLC

## **Thinking Constructively**

Providing students with a productive and engaging indoor environment is a core ideal of Reggio Emilia pedagogy. Strong indoor classrooms offer school age participants with a safe way to ask questions, problem solve, and develop new learning skills. Join other school age professionals as we explore easy and effective methods to bring Reggio Emilia philosophy into the confines of the school age classroom. School age professionals will leave with a stronger understanding of Reggio Emilia practices, and new ways to apply this philosophy to indoor environments.

**Target Audience:** *School Age childhood professionals*

**Wednesday November 30, 2022 @ 6:30 pm – 8:30 pm (Virtually)**

*Capacity limited to 30*

*2 contact hours | \$ 10.00 per person*

**Registration deadline date: Wednesday November 16, 2022**

**Trainer:** Angela Pate, NC CCR& R School Age Initiative Consultant

Receipt Number \_\_\_\_\_

### DEPC Professional Development Workshop Registration Form

**NO REFUNDS/ TRANSFER (ONLY WHEN APPROVED)**

Name: \_\_\_\_\_

Program Name \_\_\_\_\_ Mailing address \_\_\_\_\_

City: \_\_\_\_\_ State: \_\_\_\_\_ Zip Code: \_\_\_\_\_ County: \_\_\_\_\_

Email address: \_\_\_\_\_

(Note: please provide the email address that will be used for the training, as this is the email address that all information related to training will be sent)

**Please check classes for which you are registering and circle the appropriate fees. (Submit all sheets- last sheet has totals)**

Training Date	Training title	Training Time	Training location	Cost per person	Registration deadline date
<b>July</b>					
12th	<b>IT'S SIDS</b> <b>FULL/ CLOSED</b> <i>(Capacity of 10)</i>	2:00 pm-4:00pm	Virtual session	<b>\$5.00</b>	Tuesday, July 5, 2022
21st	<b>Playground Safety</b> <i>(Capacity of 10)</i>	10:00am -2:30 pm	Nash Community College	<b>\$25.00</b>	Thursday, July 14, 2022
27th	<b>It Feels Like Home</b> <i>(Capacity of 30)</i>	6:30pm- 8:30 pm	Virtual session	<b>\$5.00</b>	Wednesday July 20, 2022
<b>August</b>					
11th	<b>Workplace Resilience-Strategies to Combat Stress</b> <i>(Capacity of 30)</i>	6:30pm- 8:30 pm	Virtual session	<b>FREE</b>	Thursday August 4, 2022 Register by clicking this link <a href="https://forms.gle/Z5uT95y6HL5jGQn78">https://forms.gle/Z5uT95y6HL5jGQn78</a>
18th	<b>Sniffles, sneezes &amp; Tummy aches (Immunization &amp; disease prevention in childcare)</b> <i>(Capacity of 20)</i>	6:30pm- 8:30 pm	Virtual session	<b>\$5.00</b>	Thursday August 11, 2022
19th	<b>NC Foundations for Early Learning</b> <i>(Capacity of 10)</i> <b>CANCELLED</b>	10:00 am- 2:30 pm	Nash Community College	<b>\$25.00</b>	Friday, August 5, 2022
23rd	<b>BSAC (Before and After school Care)</b> <i>(Capacity of 10)</i>	10:00 am- 3:00 pm	Braswell Memorial Library	<b>\$25.00</b>	Tuesday August 9, 2022
27 <sup>th</sup>	<b>CPR &amp; First Aid</b> <i>(Capacity of 10)</i>	8:00 am- 1:00 pm	Nash Community College	<b>\$55.00</b>	Friday August 12, 2022
31st	<b>FCCH Business Atlas</b> <i>(Capacity of 10)</i>	6:30pm- 8:30 pm	First United Methodist Church	<b>FREE</b>	Wednesday August 17, 2022
<b>September</b>					
7th	<b>Emergency Preparedness</b> <i>(Capacity of 10)</i>	5:30pm-8:00pm	Nash Community College	<b>\$10.00</b>	Wednesday August 31, 2022
13th	<b>ITS SIDS</b> <b>FULL/ CLOSED</b> <i>(Capacity of 10)</i>	2:00pm-4:00pm	Virtual session	<b>\$5.00</b>	Tuesday September 6, 2022
20th	<b>Behavioral Intervention Strategies</b> <b>FULL/ CLOSED</b> <i>(Capacity of 15)</i>	6:30pm- 8:30pm	Virtual session	<b>\$5.00</b>	Tuesday September 13, 2022

22	<b>Learning from within</b> <i>(Capacity of 20)</i>	<i>6:30pm- 8:30pm</i>	<i>Virtual session</i>	<b>\$10.00</b>	Thursday September 8, 2022
<b>October</b>					
14th	<b>Playground Safety</b> <i>(Capacity of 10)</i>	1:00pm- 5:00pm	First United Methodist Church	<b>\$25.00</b>	Friday September 30, 2022
19th	<b>Burnout Prevention</b> <i>(Capacity of 10)</i>	<i>6:30pm- 8:30pm</i>	Nash Community College	<b>\$5.00</b>	Wednesday October 12, 2022
22 <sup>nd</sup>	<b>CPR &amp; First Aid</b> <i>(Capacity of 10)</i>	8:00am- 1:00pm	Nash Community College	<b>\$55.00</b>	Friday October 14, 2022
24th	<b>Building Classroom Community</b> <i>(Capacity of 20)</i>	<i>6:30pm- 8:30pm</i>	Virtual session	<b>\$5.00</b>	Monday October 17, 2022
<b>November</b>					
9th	<b>ITS SIDS</b> <i>(Capacity of 10)</i>	<i>4:00pm -6:00pm</i>	Virtual session	<b>\$5.00</b>	Wednesday November 2, 2022
30th	<b>Thinking Constructively</b> <i>(Capacity of 20)</i>	<i>6:30pm- 8:30pm</i>	Virtual session	<b>\$10.00</b>	Wednesday November 16, 2022
<b>December</b>					
10 <sup>th</sup>	<b>CPR &amp; First Aid</b> <i>(Capacity of 10)</i>	8:00am- 1:00pm	Nash Community College	<b>\$55.00</b>	Wednesday November 23, 2022